



A community collaboration dedicated to the long-term success of every child and youth.



# Community Early Years Services in Leeds and Grenville



Prepared by the Leeds Grenville Early Years Service Providers' Working Group for School JK Welcome Sessions





# We are here to support your family

# EarlyON

Child and Family Centre



1-866-433-8933 Ext. 2374

[EarlyON@uclg.on.ca](mailto:EarlyON@uclg.on.ca)

Follow us on Facebook at:

**Children's Services of United Counties of Leeds and Grenville**



# We are here to support your family



1-800-660-5853

[triplep@healthunit.org](mailto:triplep@healthunit.org)

[www.triplep-parenting.ca](http://www.triplep-parenting.ca)



# We are here to support your family



**LANGUAGE EXPRESS**  
Preschool Speech & Language Services System  
of Lanark, Leeds & Grenville

[Ready for Kindergarten Checklist.pdf \(healthunit.org\)](http://healthunit.org)

1-888-503-8885

[www.language-express.ca](http://www.language-express.ca)



# We are here to support your family



**Children's Mental Health  
of Leeds and Grenville**



613-498-4844 or 1-800-809-2494

[reachus@cmhlg.ca](mailto:reachus@cmhlg.ca)

[www.cmhlg.ca](http://www.cmhlg.ca)



# We are here to support your family



1-855-667-2726

[www.fcsllg.ca](http://www.fcsllg.ca)

[info@fcsllg.ca](mailto:info@fcsllg.ca)



# We are here to support your family



613-272-3302 (Portland)  
613-273-9850 (Westport)  
[www.crchc.on.ca](http://www.crchc.on.ca)



# We are here to support your family

## Infant and Child Development Program



Brockville  
General Hospital



613-345-1662





# We are here to support your family

## ConnectWell Community Health - Autism Service



<https://connectwell.ca/>

Follow us on Facebook at:

**ConnectWell Autism Services**



# We are here to support your family



[ABC Booklet](#)

1-800-660-5853

[www.healthunit.org/](http://www.healthunit.org/)

Follow us on Facebook at:

**The Leeds, Grenville & Lanark District Health Unit**



# We are here to support your family



613-345-4092

[bdaci.com](http://bdaci.com)



# We are here to support your family

**KidsInclusive**  
**EnfantsInclus**

Centre for Child & Youth Development  
Centre du développement des enfants et des adolescents

**Kingston Health  
Sciences Centre**

Centre des sciences de  
la santé de Kingston

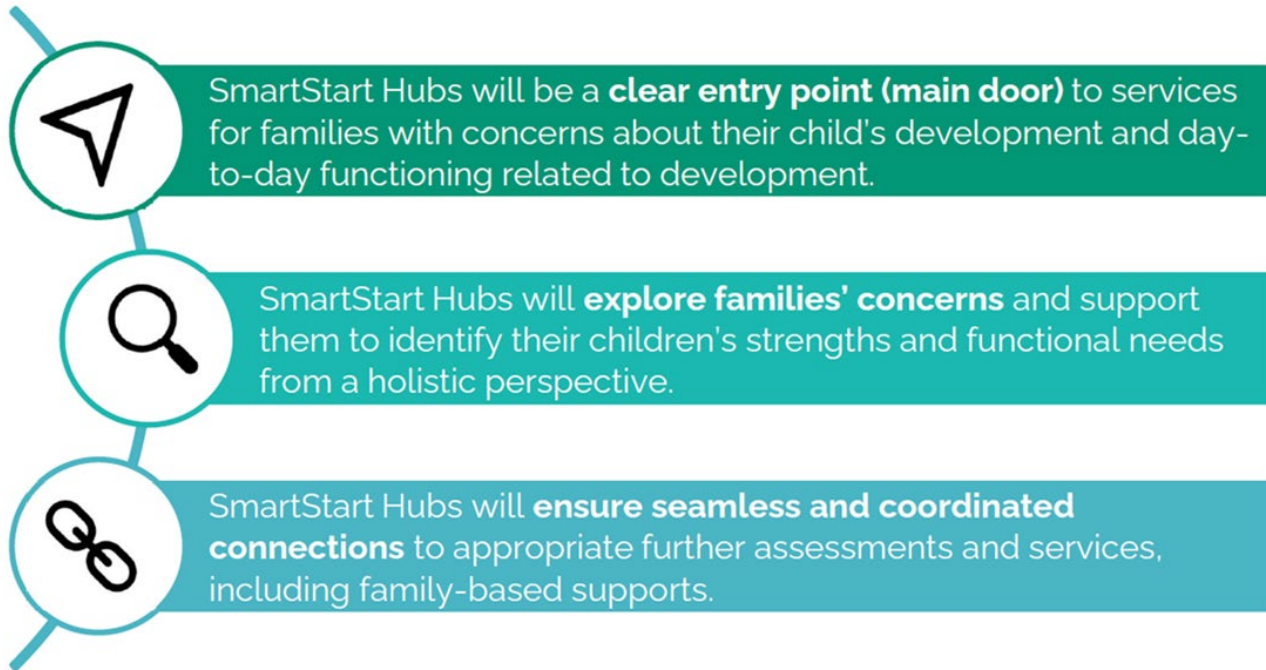
 Hôpital  
Hôtel Dieu  
Hospital

 **KG+** Hôpital Général de  
Kingston General  
Hospital



[www.kidsinclusive.ca](http://www.kidsinclusive.ca)  
1-855-3400 Ext. 3175

# SmartStart Hub Services





# We are here to support your family



613-345-1290

[www.developmentalservices.com/services](http://www.developmentalservices.com/services)

# We are here to support your family

## Licensed Child Care in Leeds and Grenville



[Licensed Child Care - Leeds & Grenville](#)

[How Does Learning Happen? Ontario's Pedagogy for the Early Years \(gov.on.ca\)](#)

[Information on Child Care and the Early Years \(gov.on.ca\)](#)



# We are here to support your family

## Child Care Fee Subsidy



For parents using licensed child care,

- With children up to 12 years old
- Employed, or enrolled in education/skill training
- Living in Leeds and Grenville



- To apply call 613-342-3840 ext 2351 or 1-800-267-8146 ext 2351 or visit <https://www.leedsgrenville.com/en/services/child-care-fee-subsidy.aspx>

Follow us on Facebook at:

**Children's Services of United Counties of Leeds and Grenville**





We are here to support your family



Brockville  
Public Library



engage | evolve | experience

[www.brockvillelibrary.ca](http://www.brockvillelibrary.ca)

Not sure who to call?

Every door is the right door!

